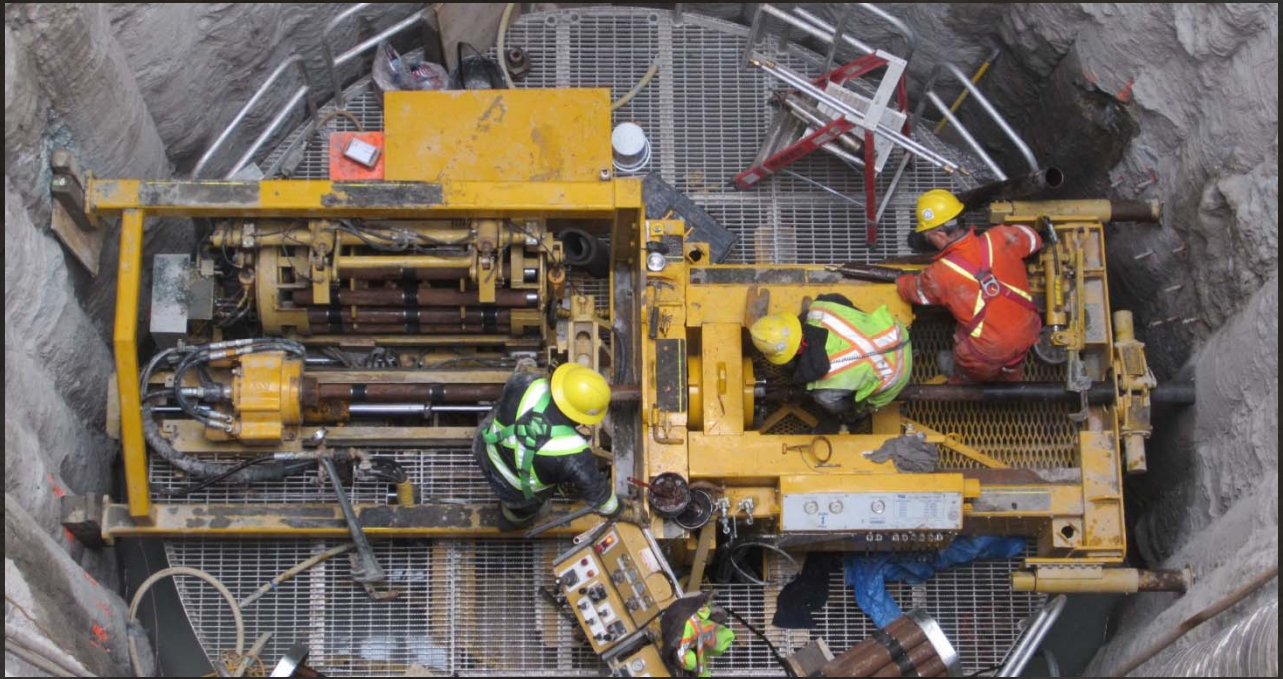


COMPENSATION GROUTING



Compensation grouting, sometimes referred to as fracture grouting, involves the injection of grout to intentionally fracture the ground, creating “grout lenses” to displace the surrounding soil in order to provide controlled heave of soils and structures. It is commonly used to protect buildings by mitigating settlement caused by tunneling operations.

Sleeve port pipes (Tube-a-Manchettes), containing rubber sleeves over predrilled holes, or ports, for injection, are installed to facilitate compensation grouting. An array of sleeve port pipes are used to ensure complete coverage and control, in the area requiring treatment, is achieved. Multiple injections are performed through the sleeve port pipes, at discrete locations, in order to treat the area.

A surface monitoring program is required in order to monitor and provide early detection of surface movements so that the compensation grouting program can be initiated, controlled, and directed.

- ▲ Detect and mitigate settlements as little as 1/32” (1mm).
- ▲ Building protection during tunneling.



Advanced Construction Techniques
Toll Free 1-877-373-7248
www.agtgroup.com

Providing innovative design-build seepage and ground modification solutions for more than 20 Years