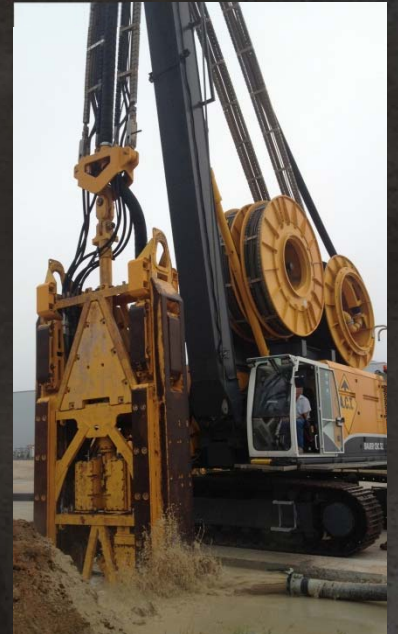


CUTOFF WALLS



A cement-bentonite or soil-bentonite Cut-Off Wall's (COW) primary purpose is to mitigate the flow of groundwater. The COW is constructed using a trench cutter and can be installed in almost any soil conditions. The trench cutter makes 'bites' to excavate rectangular panels in the earth.

The plan geometry is infinitely variable, to accommodate any plan layout of the future structure within the COW barrier. The COW acts as a barrier, enabling varying construction to proceed inside the cut-off wall. When the panels are contiguously cut, the perimeter of the COW can total thousands of feet in length.

- ▲ COWs up to 8 feet (2.5 m) wide.
- ▲ COWs to depths exceeding 400 feet (120 m).
- ▲ Infinite plan geometry able to encompass any shape.



Advanced Construction Techniques
Toll Free 1-877-373-7248
www.agtgroup.com

Providing innovative design-build seepage and ground modification solutions for more than 20 Years